



**Iowa State University**  
**National Society of Black**  
**Engineers Sponsorship**  
**Packet (24-25)**

# Letter from the President

Hello,

I am Andrew Gooding, a Senior Computer Engineering student at Iowa State University. I am honored to serve as the 2024-2025 National Society of Black Engineers (NSBE) Chairperson at Iowa State University. I would like to give you special thanks on behalf of our organization for your support. With your support together, we can continue the NSBE mission:

**"To increase the number of culturally responsible Black engineers who excel academically, succeed professionally, and positively impact the community"**

For the 2024–2025 year, NSBE at Iowa State University would like to aid this mission by being a **B.E.A.C.O.N** for future engineers. BEACON stands for:

**Black Engineers Advancing Careers, Opportunities, and Networks**

With your support, we can create opportunities for future engineers. It will also allow us to impact the communities around us, as well as help us continue to offer the many programs and resources we have for the students here at Iowa State.

As you read through this packet, you will see the best of what we have to offer and how you can improve it. We appreciate you considering NSBE at Iowa State University and look forward to building a relationship with your company.

Sincerely,

Andrew Gooding, Chairperson  
Computer Engineering, 2025  
drewgood@iastate.edu



# Executive Board



## Chair

Andrew Gooding  
Computer Engineering, 2025



## Finance Chair

Elijah Rodriguez  
Aerospace Engineering, 2025



## Vice Chair

Kobe Laws  
Civil Engineering, 2025



## Conference Planning Chair

Lucky Onyekwelu-Udoka  
Computer Engineering, MS 2024



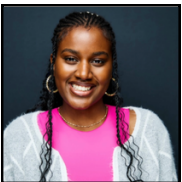
## Treasurer

Akwasi Quarcoo  
Aerospace Engineering, 2026



## Publications Chair

Tabendang Ekpombang  
Computer Engineering, 2026



## Communications Chair

Maku Forchu  
Computer Science, 2025



## Telecommunications Chair

Dede Barrigah  
Electrical Engineering, 2025



## Programs Chair

Peter Oyebanji  
Mechanical Engineering, 2025



## Community Service Chair

Kane Laws  
Computer Engineering, 2025



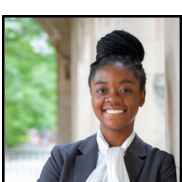
## Parliamentarian

Manas Mathur  
Computer Science, 2025



## Academic Excellence Chair

Jesutofunmi Obimakinder  
Computer Engineering, 2025



## Senator

Majeste Kyei-Amponsah  
Chemical Engineering, 2026



## Pre-College Initiative Chair

Yemurai Tavaziva  
Aerospace Engineering, 2025



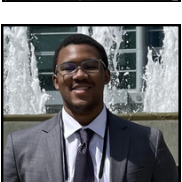
## Senator

David Aregbe  
Computer Science, 2025



## Faculty Advisor

LeQuetia Ancar, Ph.D.  
lancar@iastate.edu



## Membership Chair

Blake Coleman  
Mechanical Engineering, 2025



## Faculty Advisor

Brandon Clark, Ph.D.  
brclark@iastate.edu



# What is NSBE?

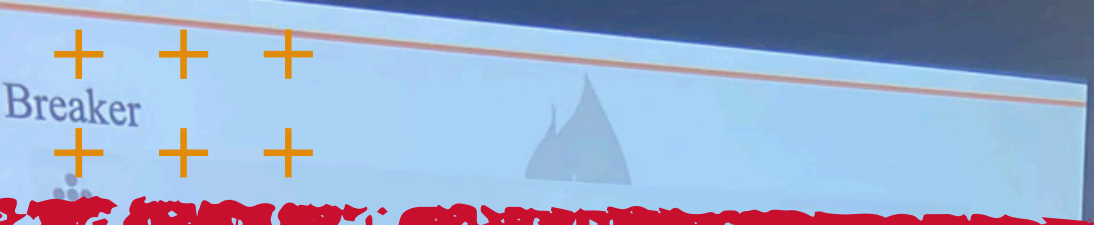
The National Society of Black Engineers (NSBE) is a student-managed, non-profit organization committed to recruiting, retaining, and motivating its members to successfully complete their college education. NSBE is an organized network of support for typically underrepresented individuals in the engineering and science community. By implementing programs that promote academic excellence, personal growth, and career development, NSBE continues to increase the number of committed professionals committed to community development and prepares to compete in technical surroundings successfully. Since its creation in 1975, the Society has represented over 23,000 members and 300 colleges and universities nationwide.

## Mission

To increase the number of culturally responsible black engineers who excel academically, succeed professionally, and positively impact the community.

## Vision

The NSBE experience empowers members to reach their full potential. We encourage our members to continue the legacy while maintaining leadership roles in NSBE, Black communities, and other professional organizations. We instill pride and add value to our members, which causes them to want to give back to NSBE to produce a continuum of success. NSBE sets a standard of excellence in providing science and engineering students services. We maximize our potential collectively to facilitate the development of quality Black engineers. We are advancing a cultural paradigm that inspires the black community to achieve greater engineering and scientific feats.



# B.E.A.C.O.N



The focus for our 2024-25 school year is to be a beacon to current and incoming students looking to make an impact in the field of engineering. This year's main directives to meet this goal are in the acronym of BEACON:

## **Black Engineers Advancing Careers, Opportunities, and Networks**

### **Black Engineers**

A Statement of Identity. We will build our community where students feel comfortable and free to express themselves to help them feel welcome in the field of engineering.

### **Advancing Careers**

Our Chapter is focused on providing students with the resources needed to improve themselves and enhance their skills in the engineering world. We offer and facilitate volunteering opportunities, workshops, and other events to help enhance the skills and value of our members in the workplace and as engineers.

### **Opportunities**

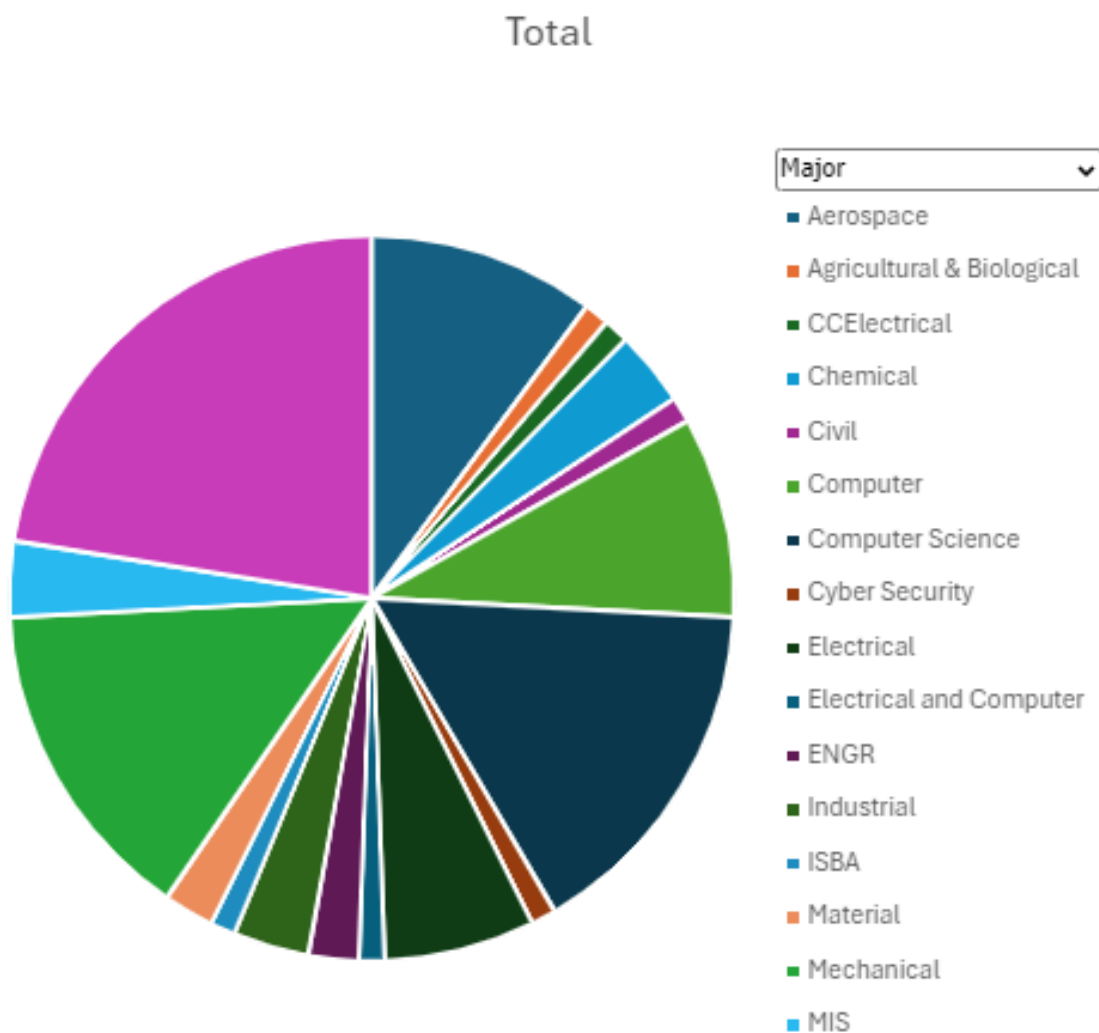
Giving members the chance to connect with others both within the university and without so that they have a variety of options at graduation

### **Networks**

Bringing members faculty, and professionals together so that our members have a wealth of resources to rely on for advice in all aspects of college life

# NSBE at Iowa State University

The student chapter of The National Society of Black Engineers (NSBE) at Iowa State University was chartered in the 1980s due to strong student interest in promoting the national organization's goals on campus. Since then, the Iowa State chapter has become a strong organization on campus, with members receiving recognition both in the ISU College of Engineering and beyond. We've had numerous students and alums serve in regional and national leadership positions, including National Chair. The Iowa State Chapter is located in Region V of the Missouri Zone and is currently comprised of 69 students in STEM majors. The graph below gives a breakdown of the majors of 40 members within our chapter.



# Club Events

## Professional Development meetings

This year, we plan on hosting 16 professional development meetings to help students grow and enhance their future careers as engineers through workshops and meetings on the many things left out of the classroom to give NSBE members a leg ahead of the competition.

## Sponsor Meetings

We also plan on having 14 different sponsored meetings to allow students to gain some insight into potential future professions and fields.

(Any Company can be invited, but due to limited slots, sponsors tend to receive priority)



## Programs

Programs at NSBE ISU are the largest non-conference related spending as it encompass the most amount of different events. Programs encompass community service, pre-college initiatives, social events, academic excellence, ISU events like Destination Iowa State and Clubfest, and works with other student organizations for Black Homecoming. All of these events are to help cultivate a strong student community for years to come and expand that community to the entire University and the City of Ames.



# Chapter Highlights

**Academics:** As a collegiate chapter, a core of NSBE is academics. To create a campus culture that strives for academic excellence, NSBE facilitates office hours and study tables with the Leadership through Engineering Academic Diversity (LEAD) Program encouraging our members to succeed academically, we have incentive programs for academic achievement along with informational sessions on academic development and success within academics.



**Collaboration:** Our chapter works hard to collaborate with student and non-student organizations that benefit the Ames community and Iowa State University. NSBE at Iowa State supports organizations such as the Black Student Alliance (BSA), the Asian Student Alliance (ASA), the Society of Hispanic Professional Engineers (SHPE), the Society of Asian Scientists and Engineers (SASE), the Society of Women Engineers (SWE), the National Panhellenic Council (NPHC), the Ames NAACP chapter, and others.

**Professional Development:** One of NSBE's goals is to support the professional development of our members. This program includes presentations on career fair preparation, resume writing, interviewing skills, networking skills, and financial empowerment. These meetings occur during our bi-weekly general assembly meetings. Mentorship programs between upper-level and new members provides academic and professional support.



**Outreach/Retention:** To continue NSBE at Iowa State, our organization participates in efforts to increase and sustain the retention of Black engineers. NSBE promotes our organization at the bi-annual ISU ClubFest, engineering orientation classes, and the LEAD Learning Community. This year we plan to sponsor a NSBE move-in crew. This will ensure that prospective members are greeted with a friendly face on their first day of college. We will continue to publicize all events and meetings on our Instagram, LinkedIn, and other social media. Social events to keep members connected and engaged are held monthly, with opportunities to connect with students within and outside of the organization.

**Conferences:** NSBE at Iowa State has attended several conferences and had record attendance from our chapter at NSBE49 in Kansas City, MO. This year, we plan to attend the Regional Leadership Conference in Austin, TX, the Fall Regional Conference in Louisiana, and NSBE50 in Orlando, FL. We feel it is imperative that our chapter is present at these conferences and continues to be a part of the national organization.



# NSBE 2024-2025 Estimated Budget

<b>NSBE National Conference</b>	<b>\$25000*</b>
• Hotels	\$17000
• Travel	\$3300
<b>Fall Regional Conference</b>	<b>\$9000*</b>
• Hotels	\$5600
• Travel	\$2000
<b>Regional Leadership Conference</b>	<b>\$7200*</b>
• Hotels	\$4200
• Travel	\$2500
<b>Chapter Expenses</b>	<b>\$11000*</b>
• Professional Development Meetings (16 total)	\$4000
• Company Visits (14 total)	\$4000
• Programs	\$5000
<b>Total</b>	<b>\$52200</b>

\*Additional convention costs (parking, registration, etc.) may vary.

# How to Support



# Tiers of Sponsorship

Incentives	Cardinal	Gold	Platinum	Black Diamond
Letter of Appreciation	X	X	X	X
General Assembly Shoutout	X	X	X	X
Social Media Post	X	X	X	X
Company Logo/Link on Website		X	X	X
General Assembly Meeting Host			X	X
Logo on Chapter Merchandise				X

# Additional Sponsorship Opportunities

## Service and Outreach:

Community Outreach	<b>\$300</b>	Semesterly
Pre-College Initiative Outreach	<b>\$250</b>	Per event

## Professional Development:

Support for Fall Regional Conference	<b>\$600</b>	Per student
Support for National Convention	<b>\$1000</b>	Per student
Food for Professional Development Session	<b>\$250</b>	Per event

## Recruitment and Retention:

Annual Freshmen Orientation and Welcome Program	<b>\$400</b>	Annually
Food for General Body Meeting	<b>\$250</b>	Per event

1. General Information

Contact Person: \_\_\_\_\_ Title: \_\_\_\_\_

Company Name: \_\_\_\_\_

Address: \_\_\_\_\_

Phone Number: \_\_\_\_\_ Email: \_\_\_\_\_

2. Sponsorship Tier

Please indicate which sponsorship tier you would like to purchase:

Cardinal Tier - \$1000.00

Gold Tier - \$2000.00

Platinum Tier - \$4000.00

Black Diamond Tier - \$6000.00

Or choose a custom amount (All sponsorship tiers below the amount will apply):

\$ \_\_\_\_\_ . \_\_\_\_\_

Please indicate what programs and events you would like your donation to go to:

\_\_\_\_\_  
\_\_\_\_\_  
\_\_\_\_\_

3. Other Contributions

We would like to donate products or supplies.

Please specify: \_\_\_\_\_

Other non-monetary support:

\_\_\_\_\_  
\_\_\_\_\_

4. Total

Total Amount: \$ \_\_\_\_\_ . \_\_\_\_\_

Signature: \_\_\_\_\_ Date: \_\_\_\_\_

**Forms can be mailed or emailed to:**

Mailing Address: 1300 Marston, 533 Morill Rd., Ames, IA 50011

Email Address: [president.isu.nsbe@gmail.com](mailto:president.isu.nsbe@gmail.com)

Email Address: [finance\\_nsbe@iastate.edu](mailto:finance_nsbe@iastate.edu)

**\*\*Sponsorship checks should be made out to the Iowa State University Foundation  
National Society of Black Engineers in the memo line. Checks may be sent to:**

Iowa State University Foundation

2505 University Blvd, P.O. Box 2230, Ames, IA 50010